

Available for Lease

Built in: 1998

Building Size: 30,000 SF

Elevator

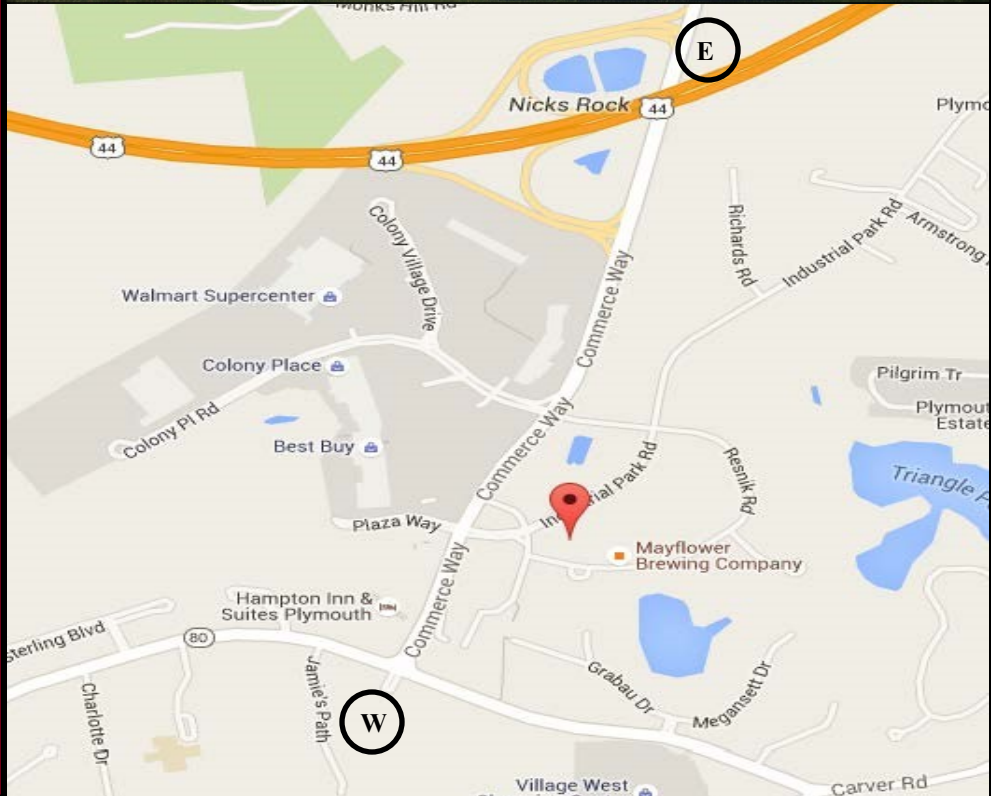
On Site Parking

Rentable Space
 Offices Available
 200 SF up to 10,000 SF

6 Resnik Road is situated just off the intersection of Commerce Way and Industrial Park Road, at the West entrance into the Plymouth Industrial Park. Opposite Plymouth's premium shopping center, Colony Place. With close proximity to Route 3, Route 44, and Route 80 allowing for easy access to both Boston and Providence Rhode Island.

Available NOW!

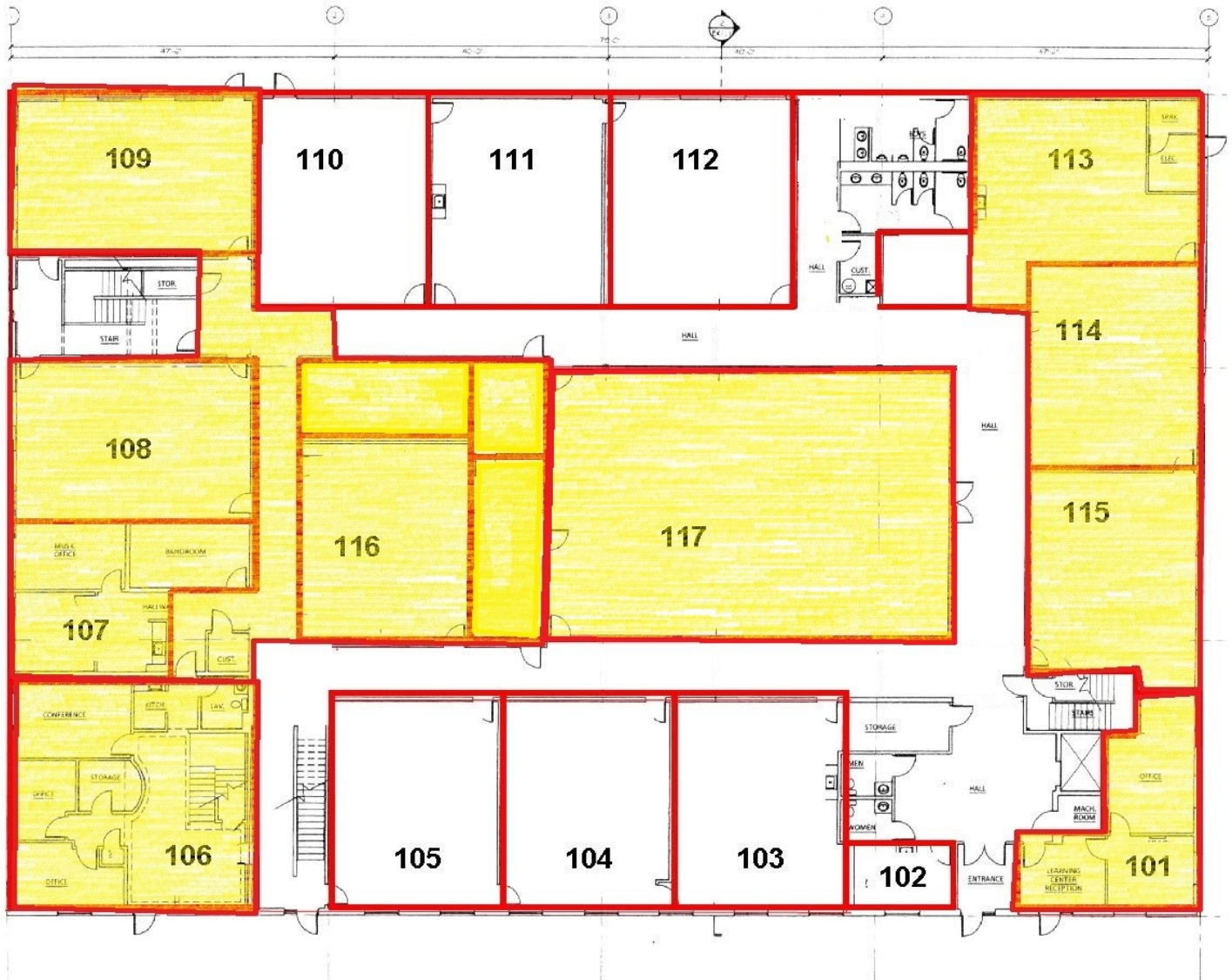
6 Resnik Road, Plymouth, MA



FOR MORE INFORMATION CONTACT:

BEN STOUT 508.746.2500 ext 202 bstout@atlanticproperties.com
PAT LEAHY 508.746.2500 ext 207 pleahy@atlanticproperties.com
RICH WADSWORTH 508.746.2500 ext 210 rwadsworth@atlanticproperties.com
SANDY DODGE 508.746.2500 ext 201 sdodge@atlanticproperties.com

6 Resnik Road, Plymouth, MA



FIRST FLOOR PLAN

First Floor: 18,595 SF

Unit 101: 720 SF LEASED
Unit 102: 216 SF
Unit 103: 930 SF
Unit 104: 930 SF
Unit 105: 930 SF
 Unit 106: 2,856 SF* LEASED

Unit 107: 751 SF LEASED
 Unit 108: 1,008 SF LEASED
 Unit 109: 1,008 SF LEASED
Unit 110: 900 SF
Unit 111: 900 SF
Unit 112: 1,008 SF

Unit 113: 1,000 SF LEASED
 Unit 114: 900 SF LEASED
 Unit 115: 960 SF LEASED
 Unit 116: 864 SF LEASED
 Unit 117: 2,714 SF LEASED

* Unit 106 is a 2 story unit

6 Resnik Road, Plymouth, MA



SECOND FLOOR PLAN

Second Floor: 6,223 SF

Unit 201: 912 SF LEASED
Unit 202: 468 SF LEASED
Unit 203: 720 SF LEASED
Unit 204: 720 SF LEASED
Unit 205: 720 SF LEASED

Unit 206: 739 SF LEASED
Unit 207: 816 SF LEASED
Unit 208: 1,128 SF