

**Available
For Sub-Lease**

**118 Long Pond Road, Suite C
Plymouth, MA**

Office Warehouse Space

Building Size: 42,200 SF

Suite Size: 2,750 SF

Private Offices:

(2) 120 SF

(1) 100 SF

Warehouse:

1,350 SF

Year Built: 1989

Loading Dock

Zoning: Light Industrial

On Site Parking

118 Long Pond Road offers a great opportunity for someone looking for one, two or three offices with a large conference or work room, in suite bathrooms and a large kitchen.

Additional space includes a 1,300 SF warehouse with loading dock that can be leased separately. Tenant is looking to sub-lease space and can be flexible with space requirements.



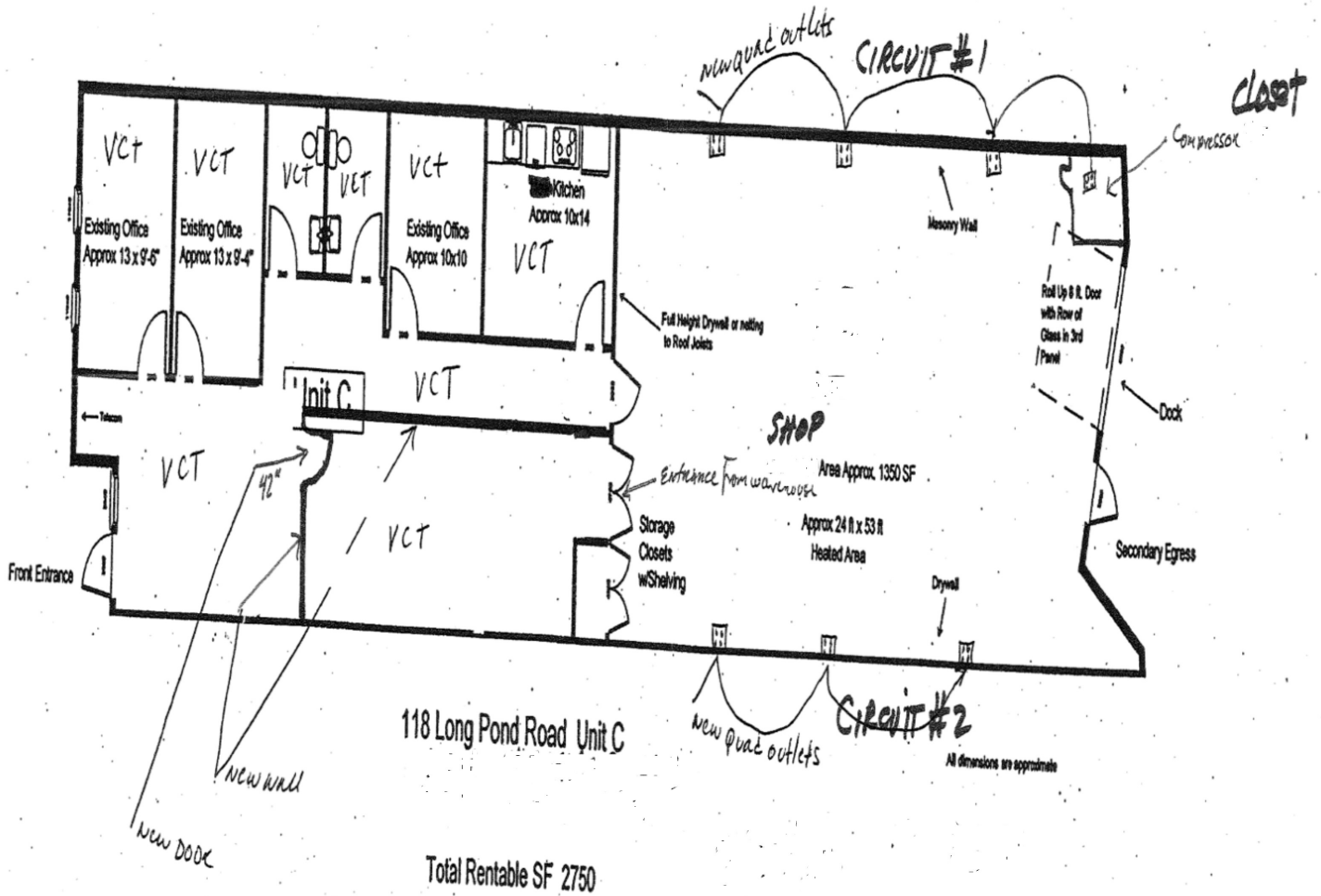
FOR MORE INFORMATION CONTACT:

BEN STOUT 508.746.2500 ext 202 bstout@atlanticproperties.com

PAT LEAHY 508.746.2500 ext 207 pleahy@atlanticproperties.com

RICH WADSWORTH 508.746.2500 ext 210 rwadsworth@atlanticproperties.com

118 Long Pond Road, Suite C, Plymouth, MA



FOR MORE INFORMATION CONTACT:
BEN STOUT 508.746.2500 ext 202 bstout@atlanticproperties.com
PAT LEAHY 508.746.2500 ext 207 pleahy@atlanticproperties.com
RICH WADSWORTH 508.746.2500 ext 210 rwadsworth@atlanticproperties.com