

The Heart of Downtown Plymouth

Main Street Retail Space
Available for Lease
1st Floor: 8,500 SF
2nd Floor: 6,500 SF

Open Floor Plan

Street Front Exposure
visibility with premium
window expanse along
heavily traveled downtown
Main Street.

46 Main Street is located in
the heart of Downtown
Plymouth, one of the most
historic cities in the country.
The space is located directly
on the main strip downtown,
is easily accessible from the
highway and is a few blocks
from the waterfront.
With the 400 Year Birthday of
the town coming up in 2020,
this is the perfect time to
invest.

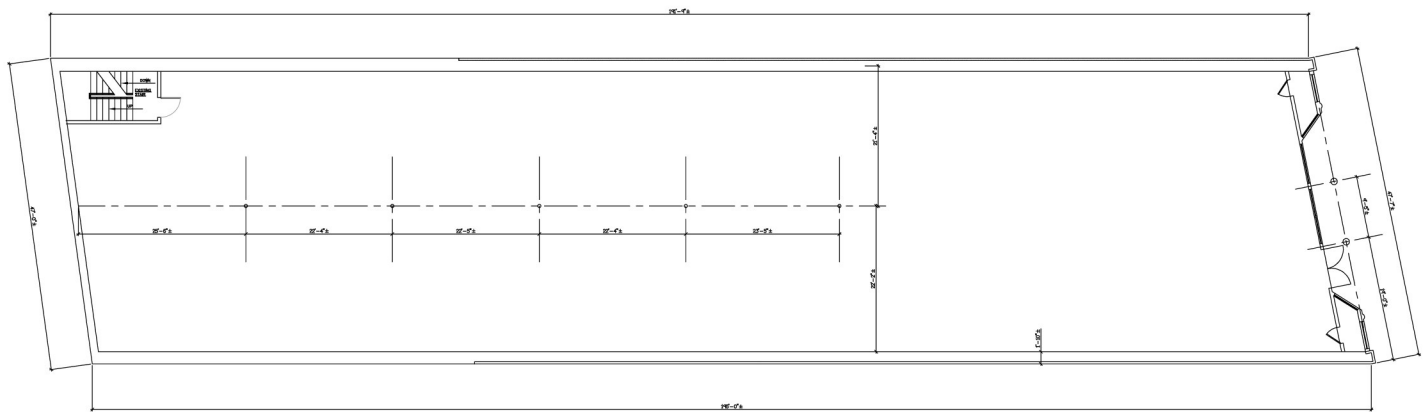
46 Main Street, Plymouth, MA



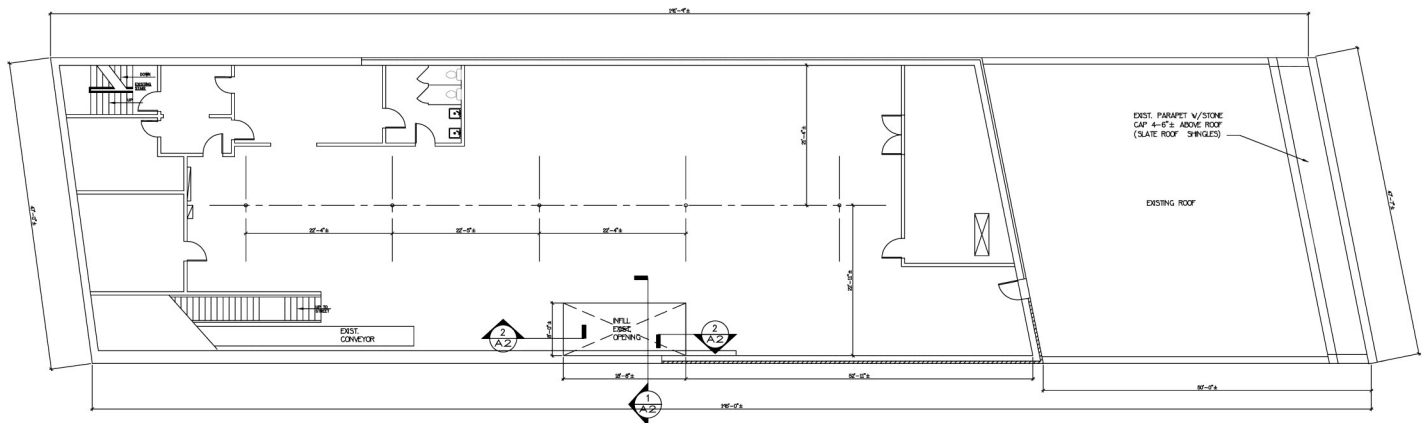
FOR MORE INFORMATION CONTACT:

BEN STOUT 508.746.2500 ext 202 bstout@atlanticproperties.com
PAT LEAHY 508.746.2500 ext 207 pleahy@atlanticproperties.com
RICH WADSWORTH 508.746.2500 ext 210 rwadsworth@atlanticproperties.com

46 Main Street, Plymouth, MA



1ST FLOOR PLAN
SCALE: 1/8"=1'-0"



2ND FLOOR PLAN
SCALE: 1/8"=1'-0"

FOR MORE INFORMATION CONTACT:

BEN STOUT 508.746.2500 ext 202 bstout@atlanticproperties.com
PAT LEAHY 508.746.2500 ext 207 pleahy@atlanticproperties.com
RICH WADSWORTH 508.746.2500 ext 210 rwadsworth@atlanticproperties.com