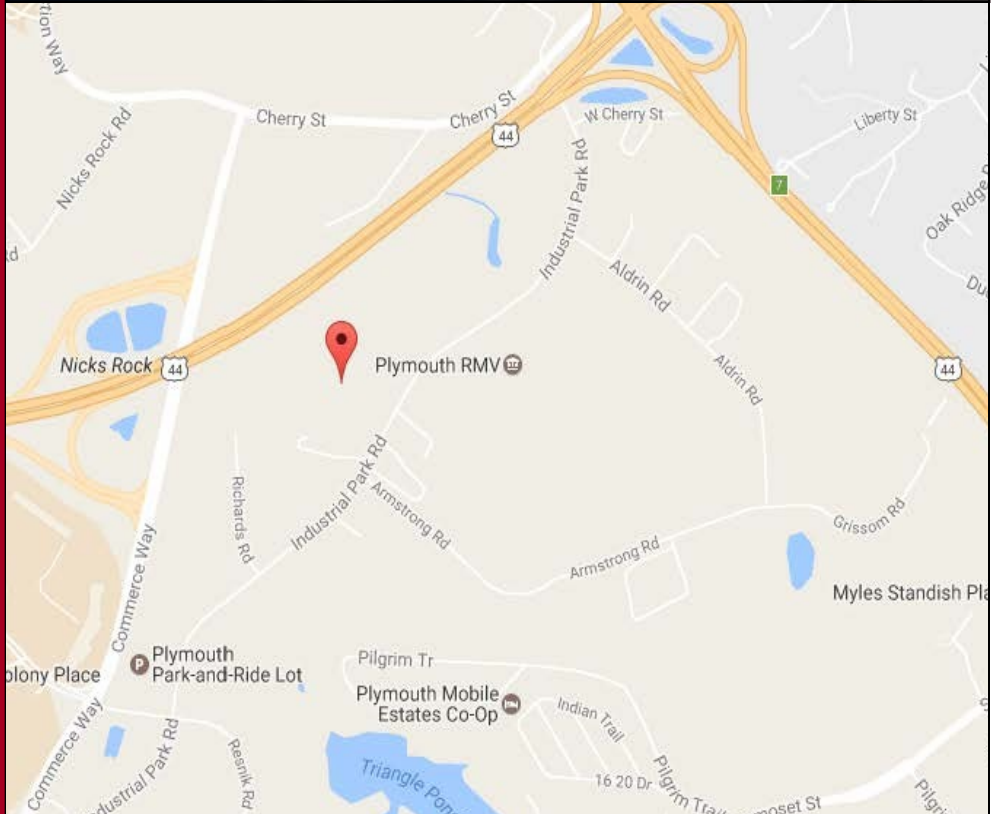


61 Industrial Park Road, Plymouth, MA



**Office Building
Available For Lease**

Building Size: 28,446 SF

Building can be subdivided
Down to about 12,000 SF

Year Built: 1980

Stories: 2

Elevator

Utilities:
Water/Sewer: Municipal
Gas/Electric: Eversource

HVAC: All New in 2008

Ample Parking:
3.5 spaces per 1,000 SF

61 Industrial Park Road is located in the center of the Plymouth Industrial Park, just off Route 3 exit 7, the interchange for Route 44 as well as the exit for Colony Place, Plymouth's premier retail shopping center. Route 3 and Route 44 are a less than a mile and a half away allowing easy access to Boston, Rhode Island, and Cape Cod.

Available for Lease

FOR MORE INFORMATION CONTACT:

BEN STOUT 508.746.2500 ext 202 bstout@atlanticproperties.com
PAT LEAHY 508.746.2500 ext 207 pleahy@atlanticproperties.com
RICH WADSWORTH 508.746.2500 ext 210 rwadsworth@atlanticproperties.com

61 Industrial Park Road, Plymouth, MA



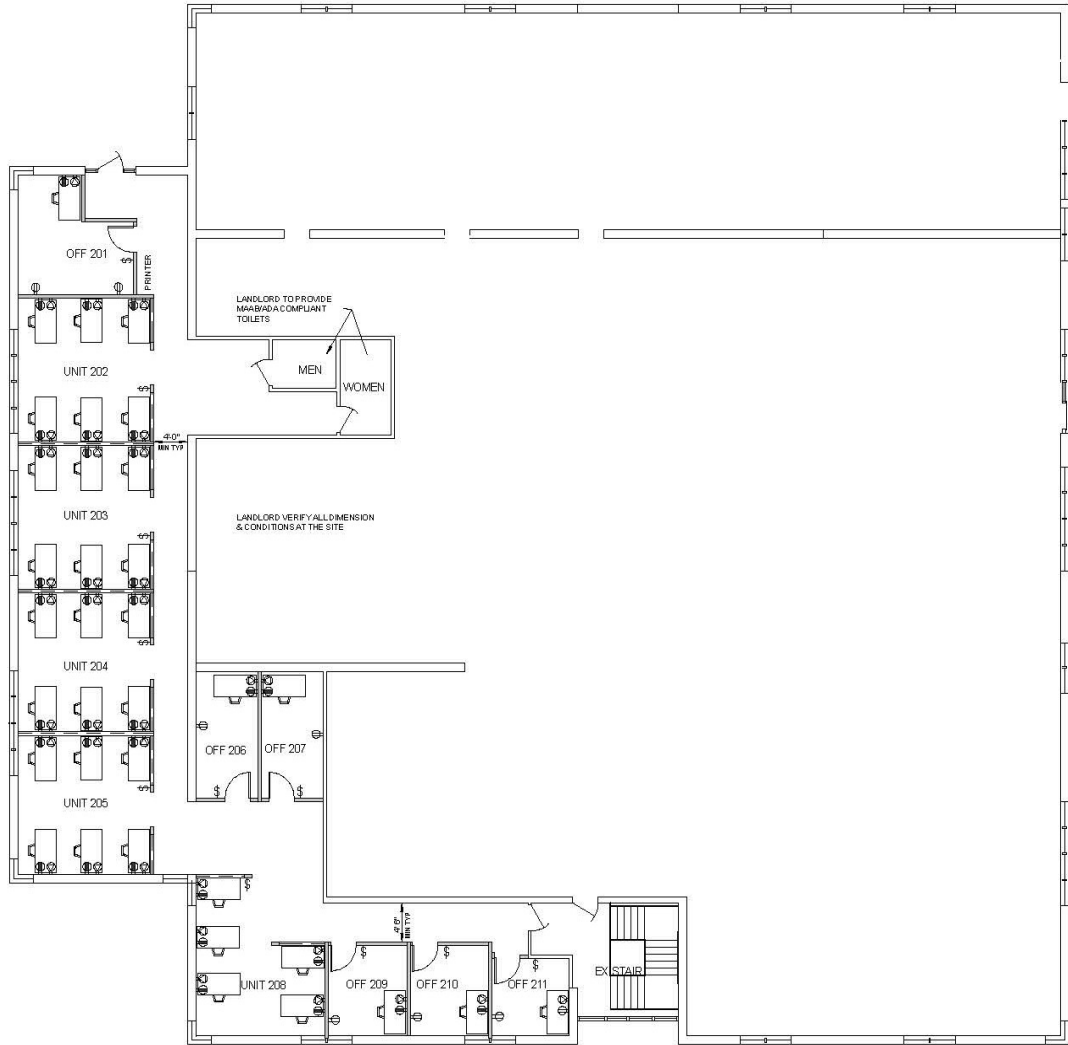
1ST FLOOR PLAN
 10 5 0 10
 SCALE

**Building
 Available for Lease
 NOW!**

FOR MORE INFORMATION CONTACT:
BEN STOUT 508.746.2500 ext 202 bstout@atlanticproperties.com
PAT LEAHY 508.746.2500 ext 207 pleahy@atlanticproperties.com
RICH WADSWORTH 508.746.2500 ext 210 rwadsworth@atlanticproperties.com



61 Industrial Park Road, Plymouth, MA



2ND FLOOR PLAN
10 5 0 10
SCALE

Building Available for Lease NOW!

FOR MORE INFORMATION CONTACT:
BEN STOUT 508.746.2500 ext 202 bstout@atlanticproperties.com
PAT LEAHY 508.746.2500 ext 207 pleahy@atlanticproperties.com
RICH WADSWORTH 508.746.2500 ext 210 rwadsworth@atlanticproperties.com